
Model	TH 35	TH 50	TL35V2
Detector Specifications			
Type	Uncooled Vox		
Resolution	640×512		384×288
Pixel size, μm	12		
NETD, mk	≤40		
Frame Rate, Hz	50		
Optical Specifications			
Objective Lens, mm	35	50	35
FOV, °	12.5×10.0	8.8×7.0	7.5×5.6
Optical Magnification, ×	3.0~12.0	4.0~16.0	3.0~12.0
Digital Zoom, ×	1.0~4.0		
Eye Relief, mm	50		70
Detection Range, m	1816	2361	1816
(Target size: 1.7m×0.5m, P(n)=99%)			
Diopter	-5~+3.5		-4~+4
Display Specifications			
Type	Micro OLED		OLED
Dimensions	1.03"		0.39"
Resolution	2560×2560		1024×768
Battery Power Supply			
Battery Type	Two built-in 18650 batteries + one replaceable 18500 battery		
Operating time (22 °C), h*	10		15
External Power Supply	5V (Type C)		
Physical Specifications			
Scope Diameter, mm	30		
Max. Recoil Power, g/s ²	1000		
Ingress Protection Rating	IP67		
Memory Capacity, GB	32		
Operating Temperature, °C	-20~+50		
Weight (Without the 18500 Battery), g	<910	<940	<950
Dimension, mm	365×85×75	370×85×75	385×85×75



Tube TH50

Both the aesthetics and the function of the Tube demonstrate InfiRay Outdoor's mission to combine the traditional style and feel of a day optic and the advanced technology of thermal imaging. TH50 is equipped with 12um 640x512 sensor, 50mm optics and 2560x2560 1.03" Micro-OLED display, bringing unprecedented comfort, super clarity and precision to your outdoor journey. For whom value tradition and pursue technology improvement, TH50 is a go-to choice.



IRay Technology Co., Ltd.

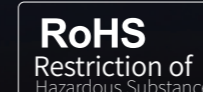
Tel: 400-998-3088

Fax: +86-535-3410604

Mail: infirayoutdoor@infiRay.com

Web: www.infiRayoutdoor.com

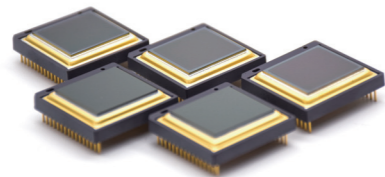
Add: 11th Guiyang Street, YEDA, Yantai 264006, P.R.China



Better Image Quality Better Observing Experience

Traditional Day Scope Appearance

The Tube Series was designed from the ground up for optimal use on bolt action rifles and other platforms that demand flexible mounting options with increased eye relief. The traditional style housing allows for mounting with standard 30mm rings like a typical day scope.



12 μm 640x512 high capacity sensor

Being the top-end thermal scope of Tube Series, TH50 is equipped with the industry leading InfiRay 12 μm 640x512 sensor with advanced image processing algorithm which has excellent performance in dealing with even the slightest temperature difference presenting detailed vivid imaging.

2361m Detection Range

Combining the extraordinary sensor and the powerful 50mm optics, TH50 can achieve the detection range up to 2361m.



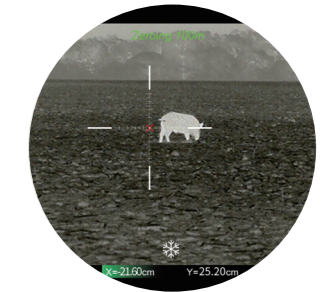
1.03" Micro-OLED display with 2560x2560 resolution

TH50 adopts particular 2560x2560 1.03" Micro-OLED display to provide finest observing experience with excellent optical parameter of 4x optical magnification and 8x eyepiece magnification, no need to stare into the screen like you used to, therefore the visual fatigue caused by the long-time observing can be prevented.



More Accurate Zeroing

The 2560x2560 Micro-OLED screen provides denser scale, each scale unit is smaller, therefore the zeroing can be more accurate.



smooth magnification adjustment

TH50 is able to magnify the imaging smoothly without flicker and stutter bringing users comfort when observing.

Shutterless Function

The Shutterless core module is adopted to nullify the shutter calibration, simplify the operation, and lower the energy consumption, making the imaging quieter and linear.

32G Storage

TH50 comes with 32GB of memory for storing 57,000 images or 48 hours of video. Captured videos and images can be easily transferred to your smartphone at lightning speed via app.



Ultraclear Mode

When Ultra-clear mode is on, bad weather condition effect is off. With Ultra-clear mode, TH50 can still provide a clear and delicate imaging even in bad weather conditions such as heavy fog and rain. Bad weather can't stop you from your great adventure.



ultraclear



ultraclear_off